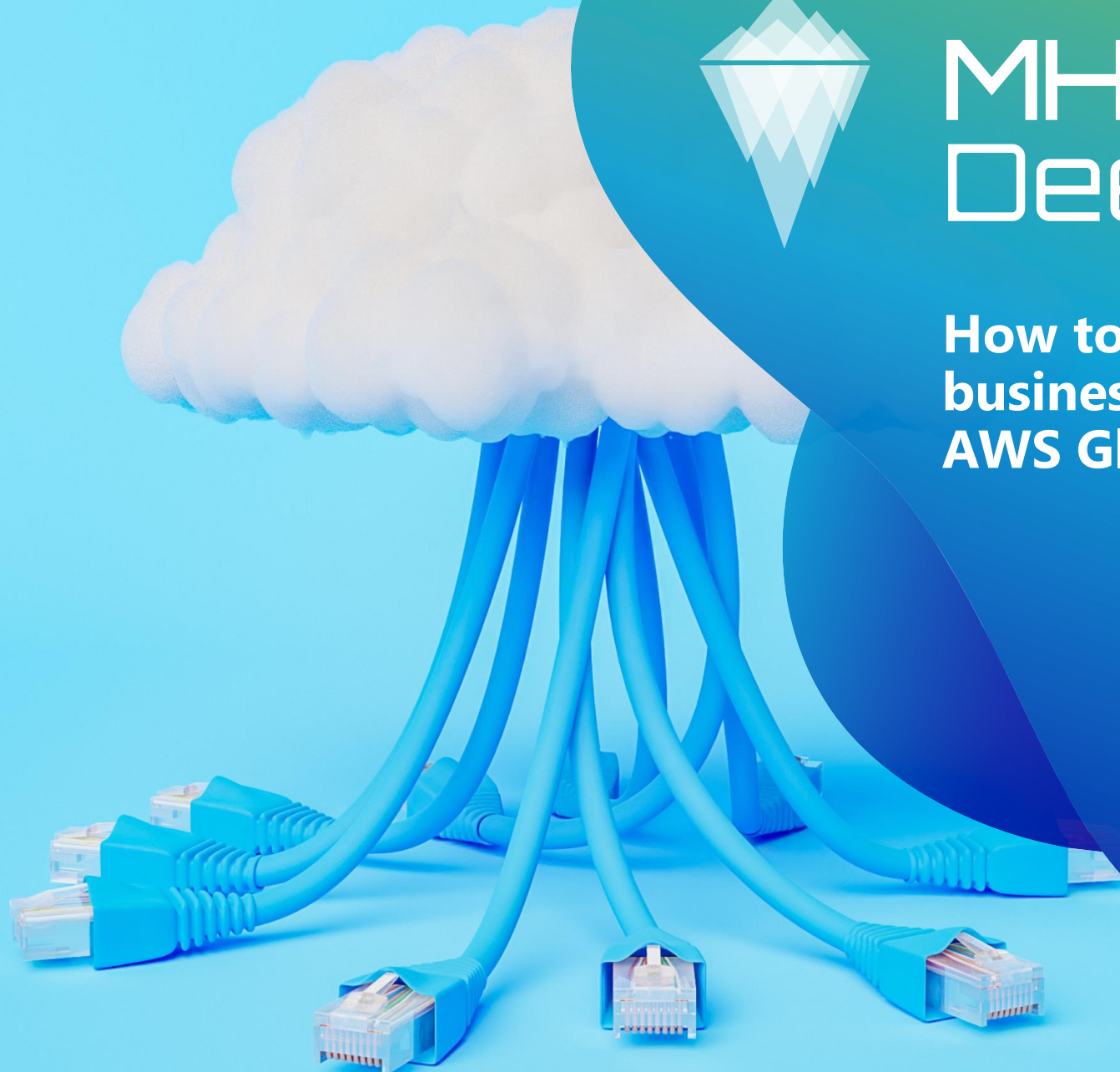




# MHP DeepDive

How to modernize your  
business processes with  
AWS Glue



# MHP DEEPDIVE

## HOW TO MODERNIZE YOUR BUSINESS PROCESSES WITH AWS GLUE



**STANKO PETKOVIĆ**

Manager  
SU ISO



**SVEN LEISS**

Senior Manager  
SU ISO



**VITOR FREITAS**

Partner Solutions Architect  
Analytics Specialist, AWS

# MHP DEEPDIVE DATES

26.01.2023

Tomorrow's production: renting  
instead of buying

23.02.2023

Immersive Experience  
Platform – Creating virtual  
worlds of experience with  
Lotus

16.02.2023

Zero Impact Products – Thinking  
innovative products & climate  
production together



<https://www.linkedin.com/company/mhp-a-porsche-company>



<https://www.xing.com/companies/mieschkeh-ofmannundpartner>

# AGENDA

1. Typical customer challenges
2. Understanding „MHP ETL Migration Factory“
  - Migration Program: Assess, Mobilize, Migrate and Modernize
  - Business value of data-transformation
3. ETL Modernization Options
4. Benefits of AWS Glue and Modernization with AWS Partner
5. Lessons learned



# TYPICAL CUSTOMER CHALLENGES

# TYPICAL CUSTOMER CHALLENGES FOR LEGACY ETL LANDSCAPES





# *UNDERSTANDING* **MHP ETL MIGRATION FACTORY**

# MHP **ETL** Migration Factory

powered by **AWS Glue**



# MHP ETL Migration Factory

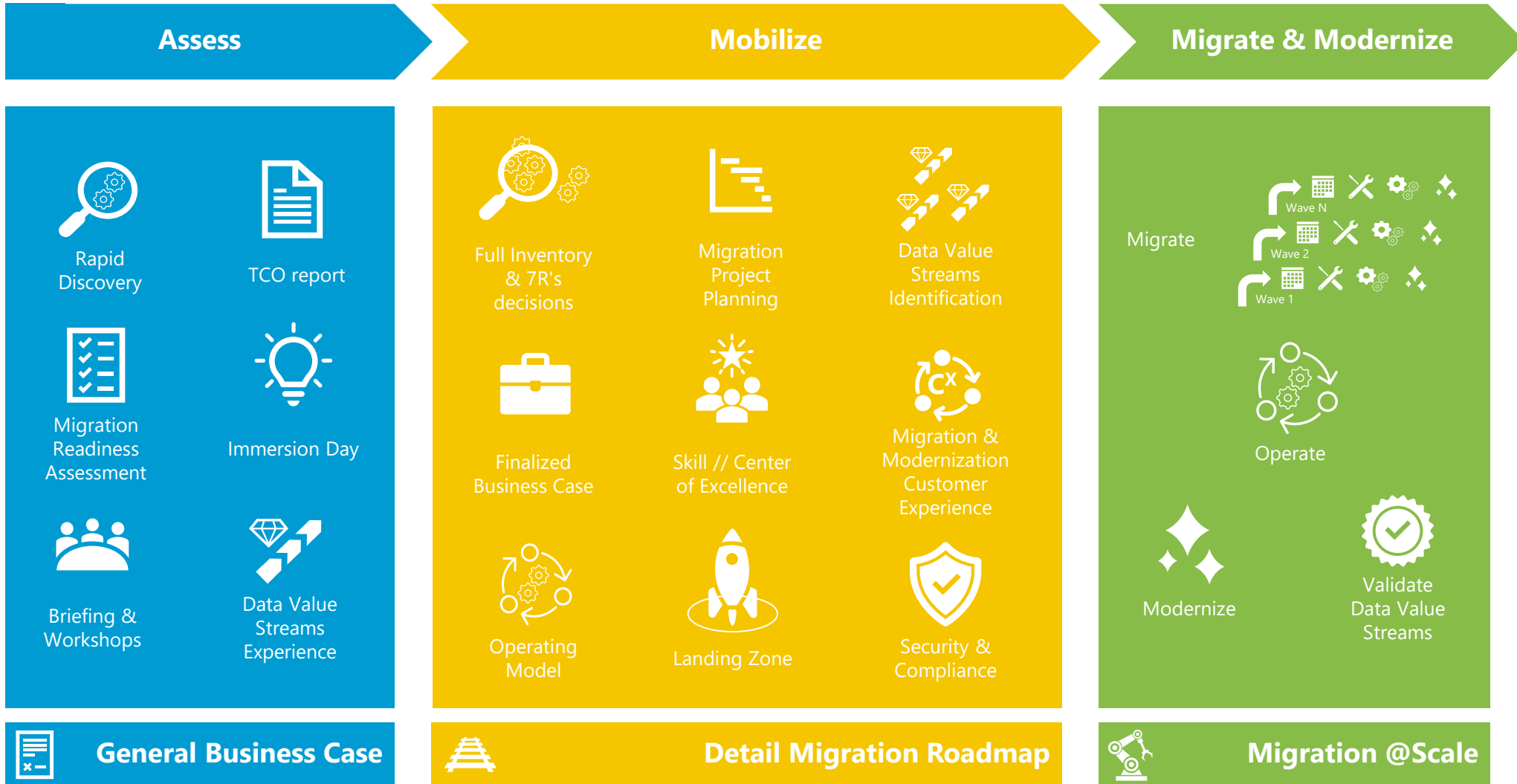
powered by **AWS Glue**



# MHP ETL Migration Factory

powered by **AWS Glue**

# MIGRATION PROGRAM



# DATA VALUE STREAMS

## BUSINESS VALUE OF DATA-TRANSFORMATION



### From technological standpoint:

- Defined Data Value Streams
- Data Processing Flows
- Data Transformation reusability
- Data Governance



### Purpose:

- Clear business value set upfront
- Identify data usage patterns
- Make right decisions on:
  - Data governance
  - Design of data ETL pipelines
  - Data persistence structure

# MHP ETL Migration Factory

powered by **AWS Glue**

# MHP ETL Migration Factory

powered by **AWS Glue**



# ETL MODERNIZATION OPTIONS

# WHAT ARE YOUR OPTIONS TO MODERNIZE YOUR ETL PIPELINES?

- Difficult to scale
- Expensive licensing
- Vendor Lock in

**01**  
**Upgrade**  
**On-Prem**  
**ETL**

**7x**  
Glue is 7x cheaper compared to on-premise options

**No lock-in**  
Glue jobs are written in open source Spark, Python, and Scala

- High total cost of ownership
- Effort to tune and manage clusters

**02**  
**DIY Spark**  
**on Cloud**

**5x**  
Adopting Glue is 5x cheaper than setting up your own Spark cluster

**4x**  
Glue reduces maintenance of your self-managed Spark clusters by 4x

- Code lock-in
- Additional cost for infrastructure
- Expensive licensing

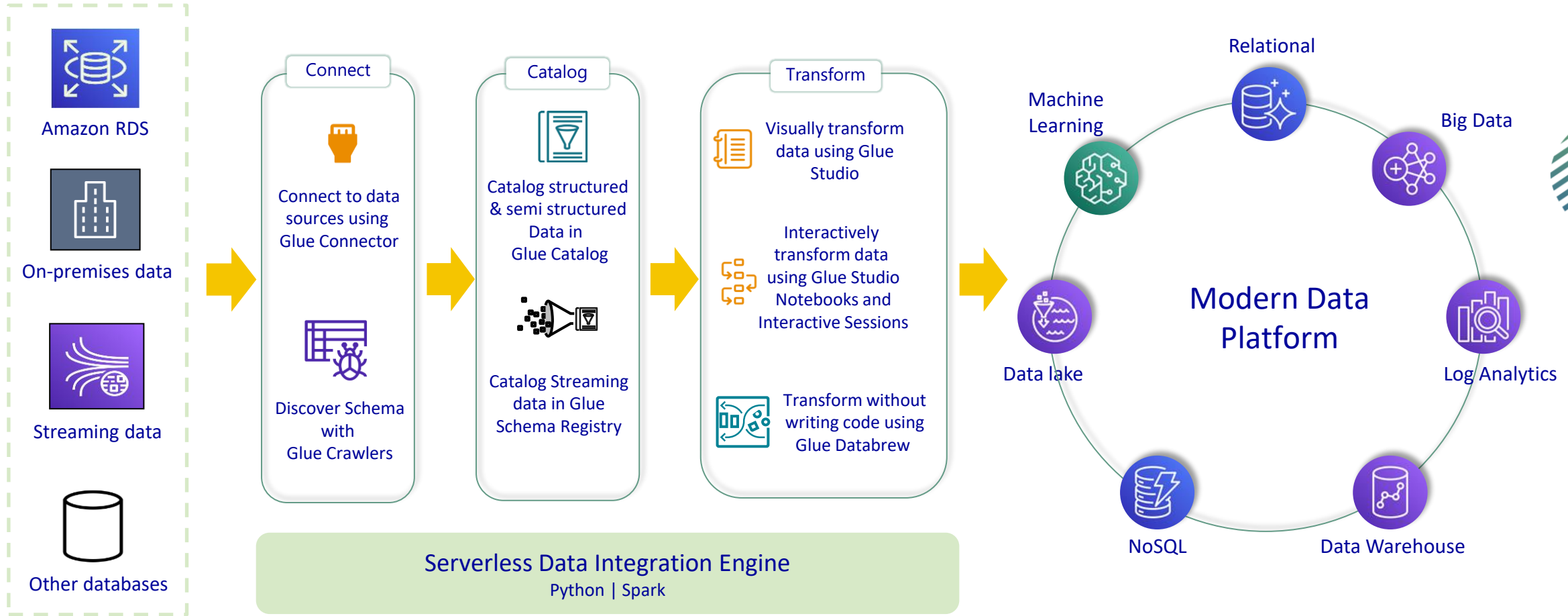
**03**  
**Cloud ETL**

**55%**  
Glue is 55% cheaper compared to other cloud providers

**Serverless**  
With Glue, there are no servers to manage and infrastructure costs included



# AWS GLUE IS THE CORE OF MODERN DATA PLATFORMS





*BENEFITS OF*

**AWS GLUE**

*AND*

**MODERNIZATION  
WITH AWS PARTNER**

# Benefits of Migrating to AWS Glue



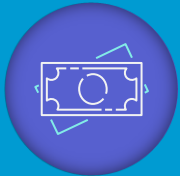
## Serverless Spark

There is no infrastructure to maintain. Allocate needed compute power and run jobs. Job starts in few seconds and can run at petabyte scale



## Data Integration for every user

Development environments catered to different skillsets - visual ETL development for Data Engineers, notebook styled development for Data Scientists and no code development for Data Analysts



## Cost-effective

All-in-one pricing model includes infrastructure and is 55% cheaper than other cloud data integration options



## Handles complex workloads

Glue connects to 60+ data sources, processes petabytes of data in real-time, batch and event driven modes



## No lock in

Develop data integration pipelines in open source SparkSQL, PySpark and Scala

# Organizations use **AWS Glue**



Build Data Lakes and Lake Houses for scalable data analysis



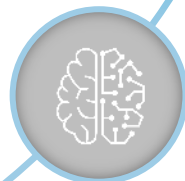
Migrate from expensive traditional ETL solutions to gain flexibility and reduce costs



Catalog data assets to make them available to AWS Analytics services



Process petabytes of data both in batch and real-time using Apache Spark



Prepare data for Machine Learning

# CUSTOMERS WHO MODERNIZED SUCCESSFULLY UNDERSTOOD THAT ...

1

Modernization leads to new capabilities, not just cost savings

Customers modernize to not only to achieve cost benefits, but also to gain new capabilities, such as elasticity, innovation, agility and self service.

3

Comparing features is not useful

Handling larger data volumes in cloud requires different techniques such as decoupling storage from compute, multi-thread processing. Features are designed to handle them as supposed to achieving feature parity.

2

It is important to embrace architecture changes

Architecture changes are inevitable and they are good. Reauthoring of legacy code helps remove technical debt.

4

Code conversion tools are accelerators and not the strategy

Code convertors helps improve productivity significantly but they don't convert entire codebase. Use other techniques such as reusable frameworks to accelerate.



# LESSONS LEARNED

# LESSONS LEARNED

1

Biggest Additional value is generated by **continual modernization of ETL Landscape**

2

**Scalability of the Approach** for larger ETL-Migration-projects

3

**MHP ETL Migration Factory** can make a noticeable contribution to your success

# LET'S GET CONNECTED



SCAN ME



**STANKO PETKOVIĆ**  
Manager  
SU ISO

LinkedIn: [Stanko Petkovic](#)

E-Mail: [stanko.petkovic@mhp.com](mailto:stanko.petkovic@mhp.com)



**SVEN LEISS**  
Senior Manager  
SU ISO

LinkedIn: [Sven Leiß](#)

E-Mail: [sven.leiss@mhp.com](mailto:sven.leiss@mhp.com)



SCAN ME



# MHP DEEP DIVE DATES

26.01.2023

Tomorrow's production: renting instead of buying

23.02.2023

Immersive Experience Platform – Creating virtual worlds of experience with Lotus

16.02.2023

Zero Impact Products – Thinking innovative products & climate production together



<https://www.linkedin.com/company/mhp-a-porsche-company>



<https://www.xing.com/companies/mieschkeh-ofmannundpartner>

# MISSED MHPDEEPDIVE?

No problem!

You can find all past MHPDeepDives here:



[www.youtube.de/MHPProzesslieferant](https://www.youtube.de/MHPProzesslieferant)



A PORSCHE COMPANY

[www.mhp.com/de/unternehmen/events](https://www.mhp.com/de/unternehmen/events)

